

## CSS DUO SERIES

## LOW VOLTAGE LINEAR LUMINAIRE

Building upon the **Duo CS**, the **CS Sconce (CSS)** transforms the beauty of a suspension fixture to an elegant wall mount. Maintaining the contemporary lines of the series, the **CSS** can be mounted from the base to present as a traditional asymmetric sconce or mid-mounted to deliver balance and symmetry.

Either selection will complement any venue while delivering crisp and clean illumination and with multiple mounting configurations available, placement options for the **CSS** abound.

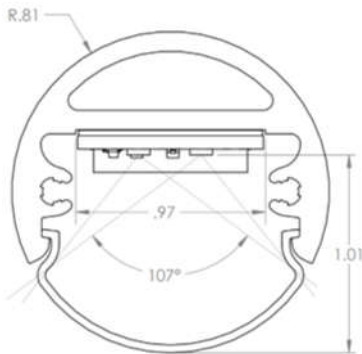
Energized by a dual row LED light engine design, the **CSS** is available in both a standard and high output configuration capable of delivering over five-hundred-twenty-five (525+) lumens per foot. The solid extruded aluminum envelop has a one-hundred-seven-degree (107°) lens opening and a beam angle of one-hundred-fifteen degrees (115°).

Available in one inch increments from twelve-inches (12") up to forty-eight-inches (48") the **CSS** is available in custom lengths to achieve the desired visual impression envisioned by the specifier.

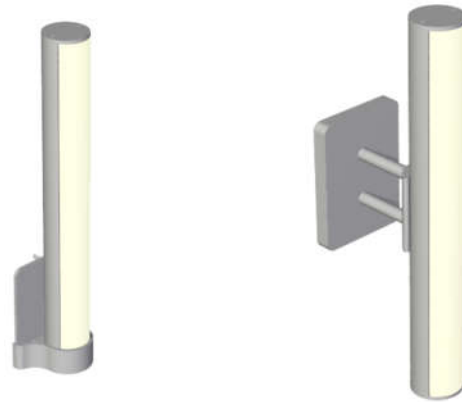
### Features

- Made in America quality and craftsmanship
- Customizable fixture lengths, CCT and CRI available
- Five CCTs and four colored LED options
- Natural anodized aluminum or white powder coated finish standard; custom color powder coats available
- Daisy chain or connect multiple fixtures to a single driver

### Mechanical Profile & Compliance



- All dimensions in INCHES



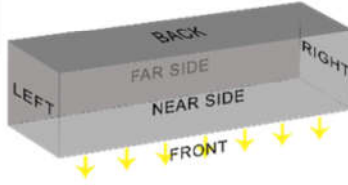
Specifications					
CCT	2700K	3000K	3500K	4000K	5000K
LED Pitch	Dual 0.5"				
Lumen Output					
SO	242	249	250	278	289
HO	442	456	459	511	528
CRI	80+ & 90+				
Beam Angle	115°				
Lens	Frosted				
Dimmable	Yes				
On Board Dimming	No				
Construction	Aluminum & Polycarbonate				
Housing Finish	Anodized Aluminum or White Powder Coat				
Fixture Length <sub>Min</sub>	12"				
Fixture Length <sub>Max</sub>	48" Mid Mount, 24" End Mount				
Ordering Increments	1"				
Power Consumption <sub>w</sub>	SO 3.84W   HO 7.68W				
Efficacy <sub>LM/W</sub>					
SO	63	65	65	72	75
HO	58	59	60	67	69
Power Supply	Class II				
Operating Voltage <sub>DC</sub>	24V				
Fixture Connectors	Flying Lead				
Fixture Mounting	End Mount & Mid Mount				
Environmental Rating	Dry & Damp				
Certifications	UL				
Warranty <sub>Limited Product</sub>	5 years				
Dimension	Fixture				
	1.6"				
Operating Temp Range	-40 to 130 °F				
Storage Temp Range	-40 to 150 °F				
Weight	0.75 lb / ft				

\* Specifications subject to change without prior notification

**Ordering Information**

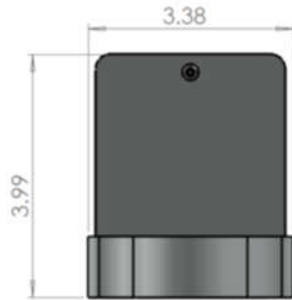
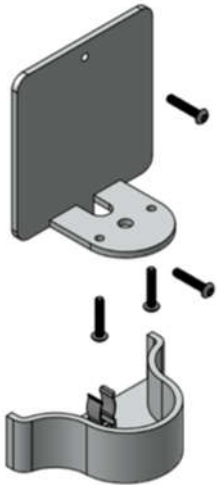
Example: CSS-16H-950-115F-BSM4

Product	Length <sup>1</sup>	Output	CRI	Color	Beam Angle	Lens	Cable on	Mount	Rod <sup>2</sup>
CSS	##	SO	80+	27	115	Frosted	Back	SE End	4
		HO	90+	30				SM Mid	6
				35					
				40					
				50					
				RED					
				GRN					
				BLU					
				YLW					

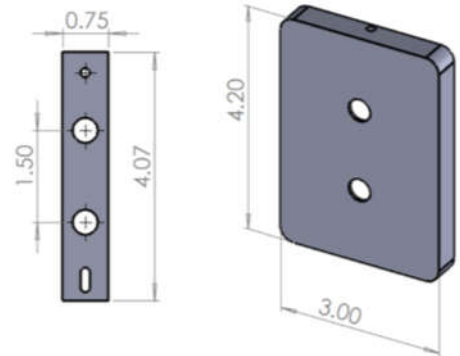
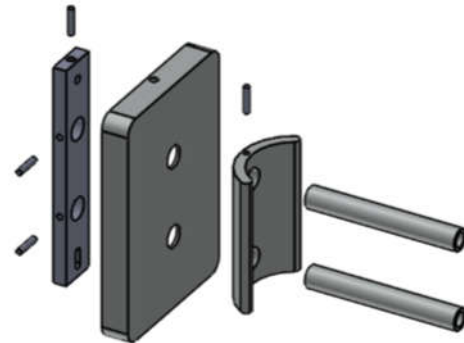


<sup>1</sup> Fixture length in inches <sup>2</sup> Distance from wall to face of fixture for SM only: leave blank for SE

**Mounting Brackets**



**Sconce End Mount**



**Sconce Mid Mount**

**Dimming**

- All dimensions in INCHES

The **Duo Series** integrates on board constant current regulation and requires a constant voltage power supply input. Dimming of these fixtures is achieved via Pulse Width Modulation, PWM, to control the driver output. The two methods recommended for dimming are through use of an inline PWM dimming controller in conjunction with the constant voltage power supply, or through use of a dimming compatible driver that will output a PWM signal.

