

XML MICRO SERIES

LOW VOLTAGE MICRO LUMINAIRE

Sleek, stylish and tiny... the XML delivers outstanding lumen output that, when combined with the less than one-point-two (1.25) cubic inch fixture envelope, is nearly imperceptible in any application.

This decorative miniature luminaire is designed for recessed and low-profile applications. Constructed of a solid aluminum housing the XML provides durability and thermal management in an aesthetically pleasing form. Available with a variety of optics to achieve the desired beam sculpting, the XML can be easily mounted in ceilings, walls and millwork to achieve the specifiers desired effect. With a class two rating, the XML is dimmable and can be joined in series or parallel from a single driver when multiple fixtures are required.

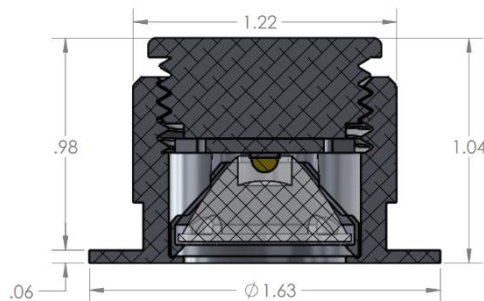
Offered in black, white, natural and chrome finishes standard and custom finishes optional, the XML can be recess mounted or surface mounted with an articulating yoke bracket. The XML once again proves the adage that good things really do come in small packages.



Features

- Made in America quality and craftsmanship
 - Solid aluminum housing for optimum heat dissipation
- Ultra-low profile for shallow recessed applications
- Five standard CCTs and four colored LEDs options
- Configurable in either series or parallel to a single driver
- Recessed and articulating surface mounting options
- Custom finish options available

Mechanical Profile & Compliance



- All dimensions in INCHES

-
-
-
-

Specifications					
CCT	2700K	3000K	3500K	4000K	5000K
LED Pitch	0.5"				
	SO:	1			
	HO:	0.5			
Lumen Output	90	94	96	104	106
CRI	80+ & 90+				
Beam Angle	10°, 18°, 32°, 50x10°				
Lens	Clear				
Dimmable	Yes				
On Board Dimming	No				
Construction	Anodized Aluminum				
Housing					
Finish	White, Black, Natural, Chrome				
Daisy-Chain Capable	Yes				
Ordering Increments	1				
Power Consumption _(W/Unit)	upto 1W				
Efficacy _(LM/W)	90	94	96	104	106
Power Supply	Constant Current - Class II				
Operating Voltage _{DC}	24V				
Fixture Connectors	Indoor PlugGo, Flying Leads				
Fixture Mounting	Retaining Spring Clip, microLuminaire Yoke Bracket				
Environmental Rating	Damp				
Certifications	UL				
Warranty _{Limited}	5 years				
Product Dimensions _{WxH}	1.22 x 1.04 in				
Operating Temp Range	-20 to 140 °F				
Storage Temp Range	-40 to 180 °F				
Weight	0.1 lb				

Specification subject to change without prior notification

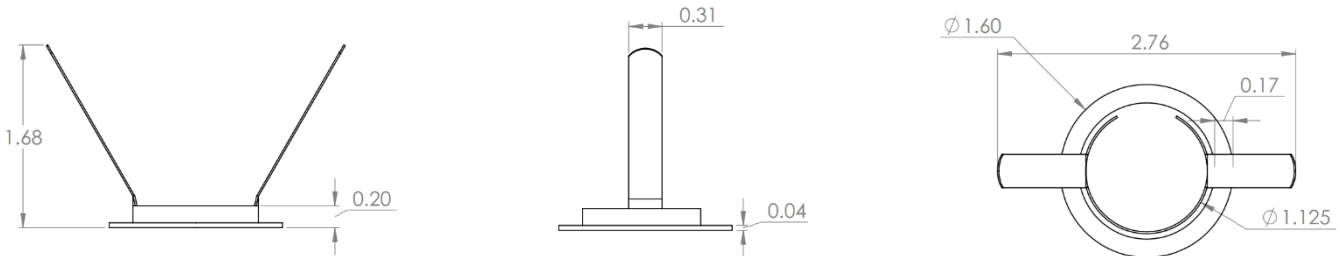
Ordering Information

Example: XML-GRN-BLK-10-RS

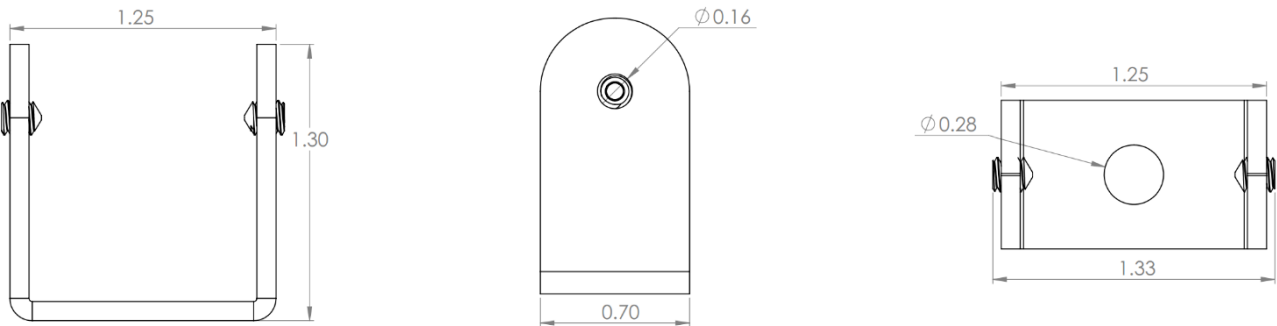
Product	CRI ¹	Color	Finish	Beam Angle	Mount
XML	80+	27	WHT - White	10	RS - Retaining Spring Clip
	90+	30	BLK - Black	18	LY - microLuminare Yoke Bracket
		35	NAT - Natural	32	
		40	CHM Chrome	50x10	
		50			
		RED			
		GRN			
		BLU			
		YLW			

¹ CRI does not apply to Colors 2 Angle of 110o for White LEDs and 130o for Colors

Mounting Clips



Retaining Spring Clip

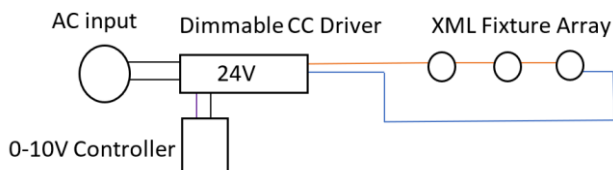


microLuminare Yoke Bracket

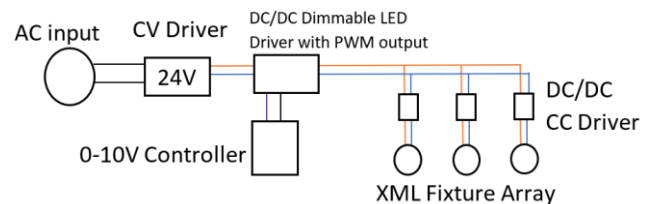
Dimming

- All dimensions in INCHES

The **Micro Series** of products is energized through a constant current power supply. There are two methods of for dimming the Micro Series which include a constant current driver with built in analog dimming or a constant voltage driver with PWM output. In either configuration, an external 0 – 10V_{DC} dimming controller is required to reduce illumination down to zero percent.



Constant Current



Constant Voltage