

# VML MICRO SERIES

## LOW VOLTAGE MICRO LUMINAIRE

Sleek, stylish and tiny... the VML delivers outstanding lumen output that, when combined with the less than a one-point-two (1.25) cubic inch fixture envelope, is nearly imperceptible in any application.

This decorative miniature luminaire is designed for recessed and low-profile applications. Constructed of a solid aluminum housing the VML provides durability and thermal management in an aesthetically pleasing form. Available with a fixed beam angle of one-hundred-ten degrees (110°), the VML can be easily mounted in ceilings, walls and millwork to achieve the specifier's desired effect. With a class two rating, the VML is dimmable and can be joined in series or parallel from a single driver when multiple fixtures are required.

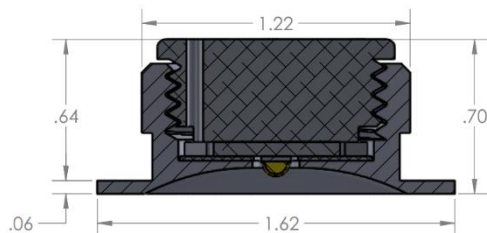
Offered in black, white, natural and chrome finishes standard and custom finishes optional, the VML can be recess mounted or surface mounted with an articulating yoke bracket. The VML once again proves the age-old adage that good things really do come in small packages.



### Features

- Made in America quality and craftsmanship
- Solid aluminum housing for optimum heat dissipation
- Ultra-low profile for shallow recessed applications
- Five standard CCTs and four colored LED options
- Configurable in either series or parallel to a single driver
- Recessed and articulating surface mounting options
- Custom finish options available

### Mechanical Profile & Compliance



- All dimensions in INCHES



### Specifications

CCT	2700K	3000K	3500K	4000K	5000K
Lumen Output	108	111	113	122	125
CRI	80+ & 90+				
Beam Angle	110°				
Lens	None				
Dimmable	Yes				
On Board Dimming	No				
Construction & Housing	Anodized Aluminum				
Finish	White, Black, Natural, Chrome				
Daisy-Chain Capable	Yes				
Ordering Increments	1				
Power Consumption <sub>(W/Unit)</sub>	upto 1W				
Efficacy <sub>(LM/W)</sub>	108	111	113	122	125
Power Supply	Constant Current - Class II				
Operating Voltage <sub>DC</sub>	24V				
Fixture Connectors	Indoor PlugnGo, Flying Leads				
Fixture Mounting	Retaining Spring Clip, microLuminaire Yoke Bracket				
Environmental Rating	Damp				
Certifications	UL				
Warranty <sub>Limited</sub>	5 years				
Product Dimensions <sub>WxH</sub>	1.22 x 0.70 in				
Operating Temp Range	-20 to 140 °F				
Storage Temp Range	-40 to 180 °F				
Weight	0.1 lb				

Specification subject to change without prior notification

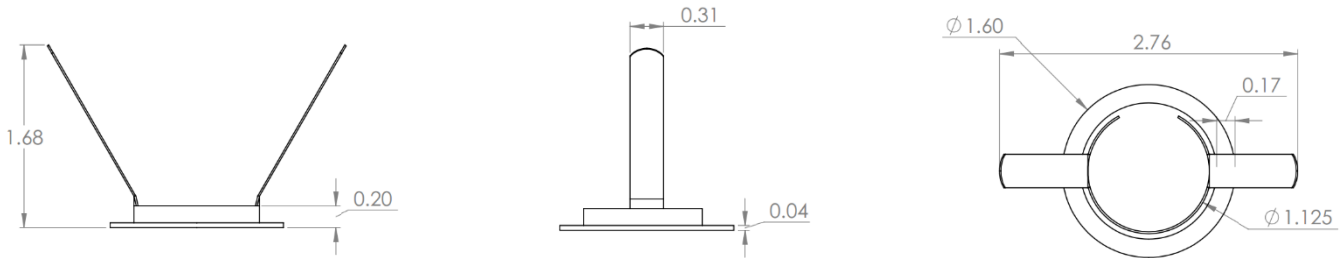
Ordering Information

Example: VML-940-NAT-110-RSC

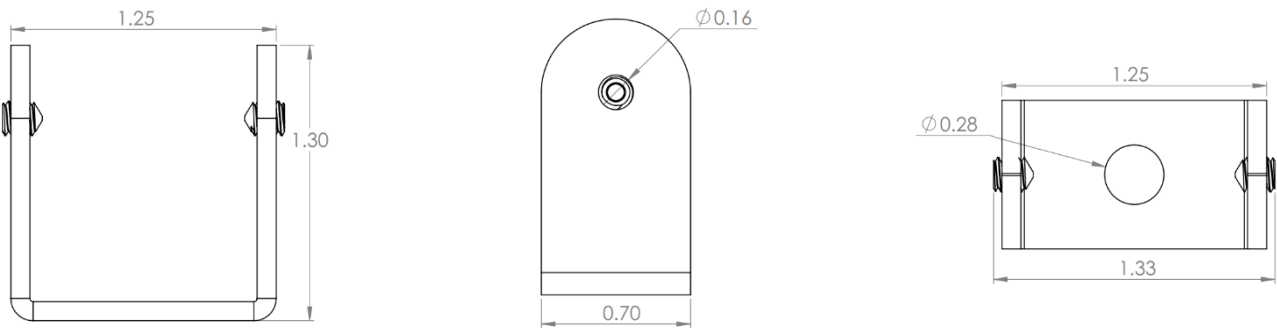
Product	CRI <sup>1</sup>	Color	Finish	Beam Angle <sup>2</sup>	Mount
VML	80+	27	WHT - White	110	RS - Retaining Spring Clip
	90+	30	BLK - Black	130	LY - microLuminaire Yoke Bracket
		35	NAT - Natural		
		40	CHM - Chrome		
		50			
		RED			
		GRN			
		BLU			
		YLW			

<sup>1</sup> CRI does not apply to Colors <sup>2</sup> Angle of 110° for White LEDs and 130° for Colors

Mounting Clips



Retaining Spring Clip

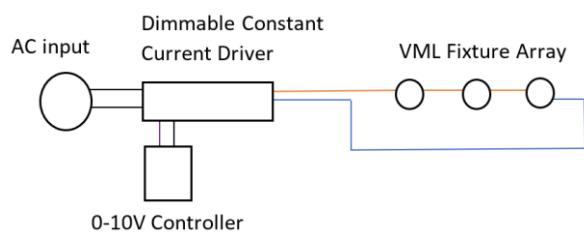


microLuminaire Yoke Bracket

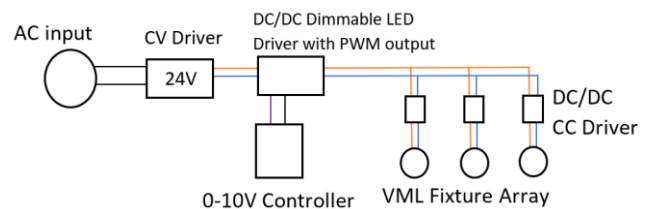
Dimming

- All dimensions in INCHES

The **Micro Series** of products is energized through a constant current power supply. There are two methods of for dimming the Micro Series which include a constant current driver with built in analog dimming or a constant voltage driver with PWM output. In either configuration, an external 0 – 10V<sub>DC</sub> dimming controller is required to reduce illumination down to zero percent.



Constant Current



Constant Voltage