

VO LUMA SERIES

Following in the footsteps of LO, the VO solution has been designed to deliver even greater lumen output through a one-inch pitch light engine making it an optimum solution for general lighting when significant illumination is required from a low-profile footprint.

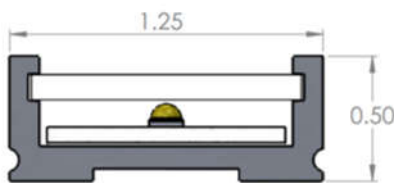
Manufactured in America and constructed with a sturdy powder coated aluminum housing, the VO delivers excellent lumen output from a very low-profile package. Available in standard output solely, the VO includes onboard 0 – 10V_{DC} dimming with either fixed or articulating mounting options to deliver maximum versatility.

Offered with either a clear or frosted lens option and capable of serving dry environments, with a damp option available, the VO satisfies many needs for specifiers around the globe. A versatile solution for numerous applications, the VO remains a staple for architects, lighting designers and specifiers who are seeking to create a specific and unique desired effect.

Features

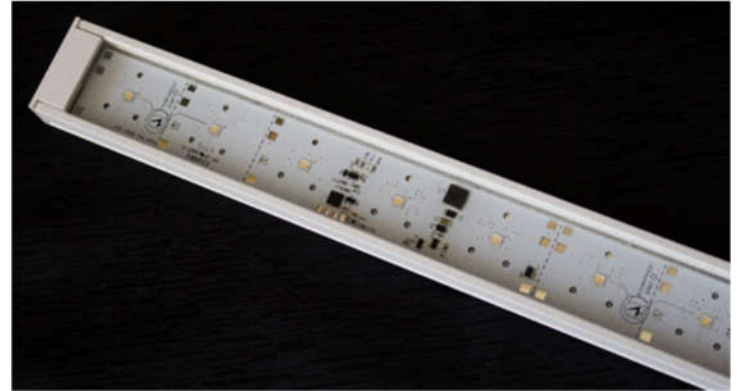
- Made in America quality and craftsmanship
- Five CCTs and four colored LED standard options
- Customizable fixture lengths, CCT and CRI available
- Powder coated, low profile aluminum extrusion for seamless integration
- Fixed and articulating mounting options
- Fixtures can be daisy chained to form a longer run and energized from a single driver
- Onboard 0 - 10V_{DC} dimming circuitry

Mechanical Profile & Compliance



- All dimensions in INCHES

LOW VOLTAGE LINEAR LUMINAIRE



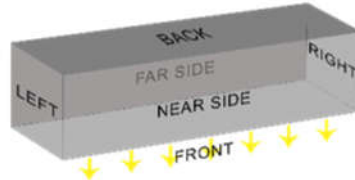
Specifications					
CCT	2700K	3000K	3500K	4000K	5000K
LED Pitch	1.2"				
Lumen Output					
Clear	875	875	888	1034	1181
Frosted	700	700	710	827	945
CRI	80+ & 90+				
Beam Angle	115°				
Lens	Clear & Frosted				
Dimmable	Yes				
On Board Dimming	Yes				
Construction	Aluminum & Plastic				
Housing	White Powder Coated Aluminum				
Fixture Length _{Min}	5"				
Fixture Length _{Max}	87"				
Ordering Increments	1"				
Daisy-Chain Capable	Yes				
Power Consumption _w	11W				
Efficacy _{LM/w}					
Clear	80	80	81	94	107
Frosted	64	64	65	75	86
Power Supply	Class II				
Operating Voltage _{DC}	24V				
Fixture Connectors	Indoor PlugnGo, Outdoor PlugnGo				
Fixture Mounting	Fixed Mounting Clip, Articulating Mounting Clip				
Environmental Rating	Dry				
Certifications	UL				
Warranty _{Limited}	5 years				
Product Dimensions _{SWxH}	1.25 x 0.50 in				
Operating Temp Range	-20 to 120 °F				
Storage Temp Range	-40 to 160 °F				
Weight	0.60 lb / ft				

Specifications subject to change without prior notification

Ordering Information

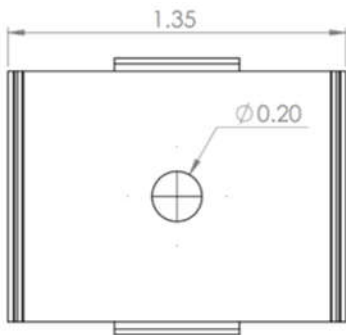
Example: VO-43S-830-115F-LE-IRE-FM

Product	Length ¹	Output	CRI ²	Color	Beam Angle	Lens	Ingress Cable Orientation	iPosition	Termination ³	Ingress Opposite Orientation ⁴	Egress Cable Position	Mount
VO	##	50	80+	27	115	Clear	Left	End	IPG	Right	X - None	FM - Fixed Mount
			90+	30		Frosted	Right	Back	OPG	Left	End	AM - Articulating Mount
				35				Nearside			Back	
				40				Farside			Nearside	
				50							Farside	
				RED								
				GRN								
				BLU								
				AMB								

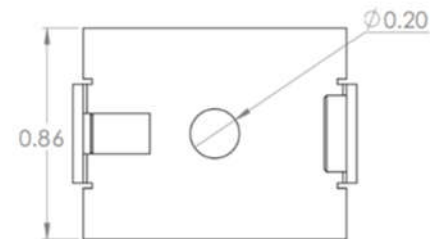
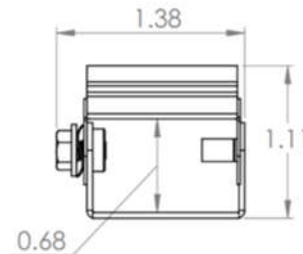
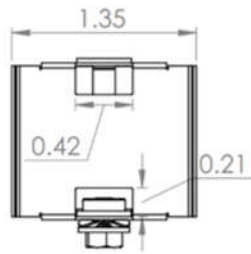
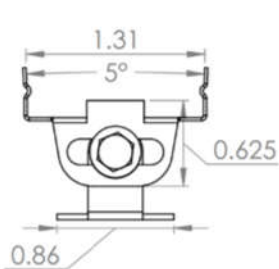
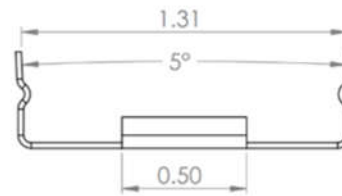
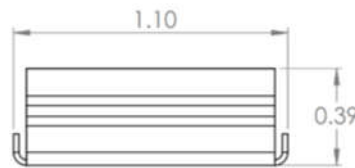


¹ Fixture length in inches, ² CRI does not apply to Colors; leave blank ³ Indoor PlugGo, Outdoor PlugGo or Flying leads ⁴ Will always be the opposite letter of the Ingress Cable Orientation

Mounting Clips



Fixed Mounting Clip



Articulating Mounting Clip

- All dimensions in INCHES

Dimming

The Luma Series of products are designed with a built-in dimming circuit that requires a 0 - 10 V_{DC} sinking dimming controller to properly function. Either a third party sinking dimmer controller can be used or select one of two available options in the LEDynamics LVD Series of dimmer solutions.

