



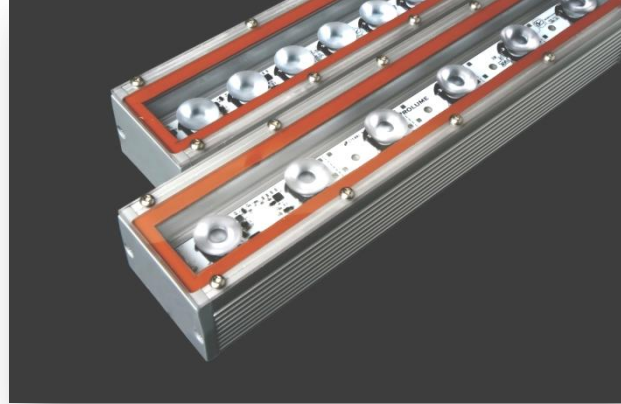
**Energy Efficient, High Quality,
LED Lighting Products**

SERIES CPT

HIGH OUTPUT OUTDOOR LED LIGHTING FIXTURE with CREE® XLamp® XP-E LEDs

Prolume Series CPT lighting fixtures allow the custom design of hi-flux lighting in exterior applications including building façades, landscape designs, wall grazing and more. Key features include...

- **Fixture Design and Construction**
Extruded aluminum housing with machined aluminum end caps and UV stabilized polycarbonate lens. Sealed and gasketed construction. Clear anodized finish. Provided with 20/3 tray cable termination (length to be specified) for wiring to remote mounted driver.
- **LEDs / Optics**
Fixture uses industry leading lumen performance high brightness CREE XLamp XP-E LEDs, in a CCT range from 2700°K to 5000°K, with a > 50,000 hour life to 70% lumen maintenance. LEDs can be fitted with secondary optics in a range of beam patterns to suite the application. Color LEDs available. Consult factory.
- **Electrical Design**
A uniquely designed illumination board, integrates LuxDrive™* circuitry for current regulation and provides electrical management of the LEDs. Dimming using 0-10V *current sink* lighting control protocol is resident in the board circuitry. With operating efficiency at > 90%, energy is emitted as light with as little as 5% as heat. Fixtures are rated at 24VDC with current ratings from 350mA to 700mA depending on LED pitch.



(Fixtures shown with 1.2" and 2" LED pitch)

- **Thermal Management**
Central to overall fixture design is thermal management. Extensive fining of the extrusion body to create more surface area for heat sinking and the use of current regulation circuitry, thermal vias and heat spreading copper in the FR4 board design insure life and performance.
- **Installation and Power**
Fixtures are provided as sealed units to allow mounting to structure. See separate data sheet for choice of mounting brackets. They are designed for installation using Class 2 wiring methods. Tray cable home run termination in lengths as specified, allow electrical grouping of drivers for convenience.
- **Approvals**
UL Listed for Wet Location. Outdoor rated.



*LuxDrive is a registered trademark of LEDynamics

Fixture Schedule:

Type	Model Number

Job:

Remarks:



HIGHLY INNOVATIVE • TECHNOLOGY BASED • QUALITY LIGHTING PRODUCTS

525 Fan Hill Road • Monroe • Connecticut 06468
Phone (800) EXIT-LED • FAX (203)268-7855
www.prolumeLED.com
email: info@prolumeled.com

POWER AND ILLUMINATION

POWER				LUMINOUS INTENSITY (Average Lumens / FT) ⁽¹⁾				
BASIC MODEL	LED CURRENT	LED PITCH	W / FT ⁽²⁾	CCT				
				2700°K	3000°K	3500°K	4000°K	5000°K
CPT3/2	350mA	2"	7.0	379	429	437	445	530
CPT5/2	500mA	2"	10.0	528	600	612	624	744
CPT7/2	700mA	2"	14.0	606	686	700	712	848
CPT3/1	350mA	1.2"	12.0	630	714	727	740	880
CPT5/1	500mA	1.2"	17.0	884	1004	1021	1037	1241

Lumen De-Rating Factors: Optics (.7) / Lens (.9) / Optics & Lens (.6) - Multiply factor by table lumens to get actual fixture lumens.
 Notes: (1) Measured after thermal stabilization of LED light engine. (2) Includes driver losses for sizing.

LEDs and OPTICS

LED SELECTOR / ANSI Binned			
COLOR	CCT	CRI	ORDER SUFFIX
Warm White	2700°K	85	W827
Warm White	3000°K	85	W830
Neutral White	3500°K	85	N835
Neutral White	4000°K	85	N840
Cool White	5000°K	70	C750

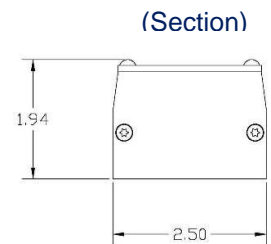
Other CCT, CRI and color options may be available.
Consult Factory

OPTICS SELECTOR	
VIEWING ANGLE	ORDER SUFFIX
40° Wide	W
15° Spot	S
50° x 10° Elliptical	E
(NO OPTIC) 115° FWHM	N

Consult Factory for other options.

DIMENSIONS

FIXTURE LENGTH (")			
12	24	36	48



ORDERING...

BASIC MODEL – FIXTURE LENGTH – LED – OPTIC / HR CABLE LENGTH (FT)

EXAMPLE...MODEL CPT3/2 – 24 – W830 - S / 10TD

Series CPT fixture, 350mA current, 2" pitch, 24" length, warm white 85 CRI 3000°K CCT LEDs, spot optic and 10' dimming tray cable home run leads. Mounting brackets and drivers ordered separately. See specification pages.

DIMMING

Fixtures are provided standard with a third rail DIM line to allow dimming using a 0-10V lighting control protocol. When wired as shown, the dimming controller must be able to sink .5mA per foot of all connected fixtures. Less than .5mA will be "off". If the controller cannot sink .5mA, a separate control should be used to disconnect the AC from the LED driver to turn the fixture(s) completely off.

DIMMING SCHEMATIC

