



Energy Efficient, High Quality,
LED Lighting Products

DRIVERS and DIMMING MODULES

for Class 2 Wiring Methods

CONSTANT VOLTAGE DRIVERS								
MODEL NUMBER	OUTPUT (DC)			INPUT (AC)		NOTES	REF	
	POWER	VOLTAGE	CURRENT	VOLTAGE	CURRENT			
PSTR24-12	12W	24	.5A	120/277V	.15A/.05A	1, 3, 4	A	
PSLT24-25	25W	24	1.0A	85/277V	.3A/.1A	1, 3, 4	B	
PSX24-40	40W	24	1.8A	120V	.42A	1, 2, 4	C	
PSX24-48	48W	24	2.0A	120/277V	.8A/.3A	1, 2, 4	D	
PSX24-72	72W	24	3.0A	120/277V	.72A/.32A	1, 2, 4	D	
PSX24-100	100W	24	4.1A	120/277V	.95A/.40A	1, 2, 4	E	
CONSTANT CURRENT DRIVERS								
MODEL NUMBER	OUTPUT (DC)			NUMBER OF LEDs	INPUT (AC)		NOTES	REF
	POWER	VOLTAGE	CURRENT		VOLTAGE	CURRENT		
PSLT1/350	1W	2.0-6.0V	350mA	1	100/240V	.3A/.05A	1, 3, 4	F
PSLT6/350	6W	2.0-20.0V	350mA	1 - 4	120/277V	.7A/.12A	1, 3, 4	G
PSLT10/350	10W	2.3-28.0V	350mA	2 - 8	120V	.23A	1, 3, 4	A
PSLT18/350	18W	4.0-52.0V	350mA	4 - 12	120/277V	.17A/.08	1, 3, 4	H
DIMMING MODULES								
MODEL	DESCRIPTION						NOTES	REF
DCX	Titanium LED Dimming Module from Advance. Works with 24VDC driver to dim up to 100W of Series LIA, RIA20 and RIA40 Linear Arrays using 0-10V control.						1, 2, 4	J
OT-350/DIM	Optotronic LED Dimming Module from Osram. Works with 24VDC 10W driver to dim 1-7 Series XML fixtures wired in series using 0-10V control.						1, 5	K
PSLT18D/350	Can be used with trailing edge two wire control dimmers to dim 4-12 XML Series fixtures wired in series from 100% down to 10%.							
DIMMING DRIVERS								
Consult Factory for compatibility and dimming range of dimming drivers and drivers other than those listed above								

Fixture Schedule

Type Module Number

Job:

Remarks:

Notes:

- 1) UL, CUL Recognized
- 2) UL Dry & Damp
- 3) IP 67
- 4) 18AWG solid input and output wires
- 5) Dry only. No wiring leads provided

DIMENSIONS / FORM FACTORS

Figure A



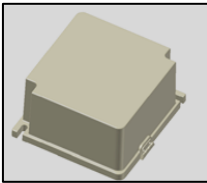
3.43" L x 1.38" W x 1.1" H

Figure B



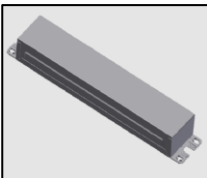
5.24" L x 1.57" W x 1.2" H

Figure C



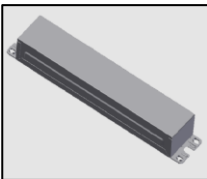
3.30" L x 3.53" W x 1.5" H

Figure D



9.54" L x 2.35" H x 1.47" H

Figure E



9.45" L x 1.7" W x 1.18" H

Figure F



1.34" L x 1.26" W x .96" H

(Form DVRS/060914.Rev2)

Figure G



1.77" L x 1.77" W x .98" H

Figure H



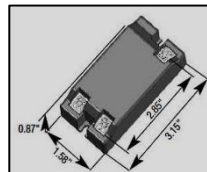
5.24" L x 1.57" W x 1.2" H

Figure J



5.20" L x 1.35" W x .99" H

Figure K



3.15" L x 1.58" W x .87" H

ENCLOSURE / NEMA 3R (FOR PSX24-48/72/100 DRIVERS)



15.2" L x 2.32" X 3.23" H

Class 2 Power / Wiring Guidelines

NEC provides a definition and the field application requirements relating to the wiring and power limits of Class 2. They include...

- Only the **load side** of a DC power supply can meet the requirements of Class 2
- Class 2 limits outputs to **30VDC** maximum with a capacity to **100 watts per circuit**
- Class 2 requires **dry indoor use**. For outdoor applications power supplies must be mounted indoors or in appropriately rated NEMA rated outdoor enclosures



HIGHLY INNOVATIVE • TECHNOLOGY BASED • QUALITY LIGHTING PRODUCTS

525 Fan Hill Road • Monroe • Connecticut 06468
Phone (800) EXIT-LED • FAX (203)268-7855
www.prolumeLED.com
email: info@prolumeled.com